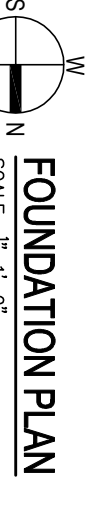


FOOTING SCHEDULE

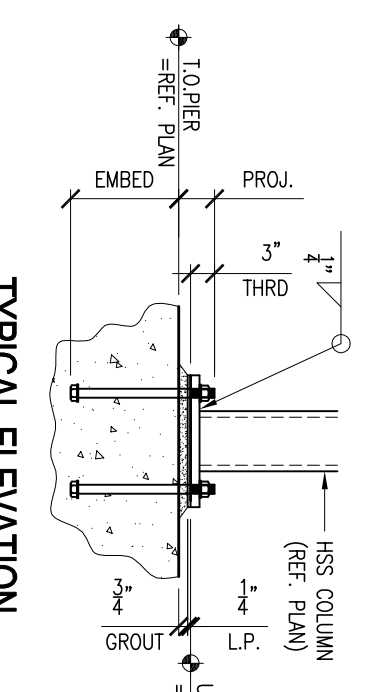
MARK SIZE (WIDTH/LENGTH) THICKNESS	REINFORCEMENT
F-1 1'-4\"/>	

FX → FOOTING MARK
BOX-X-Y-Z → B.O.F. ELEVATION
BP-X-Y-Z → BASE PLATE MARK
DP-X-Y-Z → DRAINAGE ELEVATION
PX → PIER MARK
BOX-X-Y-Z → T.O.F.B. ELEVATION



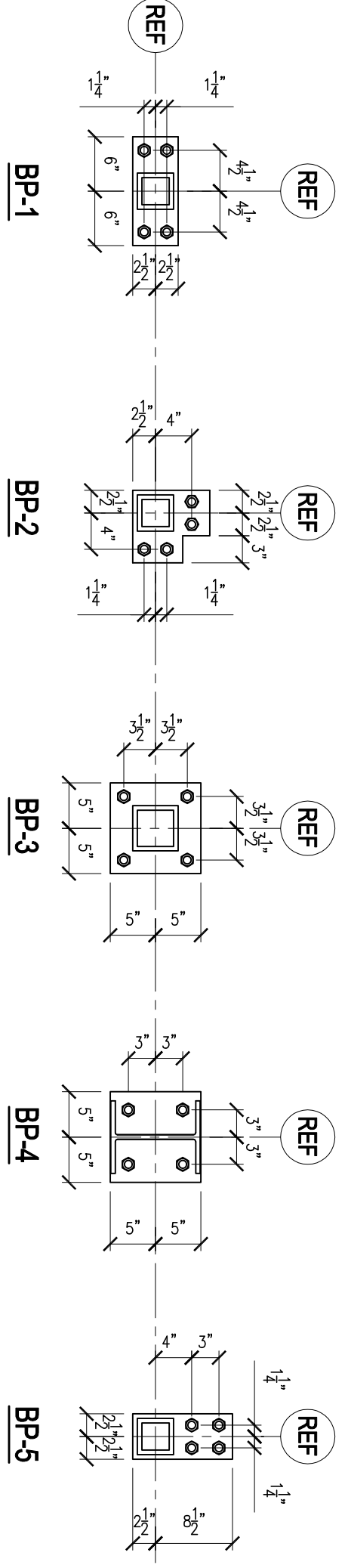
FOUNDATION PLAN
SCALE: 3/8\"/>

- NOTES:**
1. FOOTINGS SHALL BE CENTERED UNDER SUPPORTED MEMBERS, UNLESS NOTED OTHERWISE.
 2. SHIFT F-4 FOOTINGS AS REQ'D. FROM AGAINST EXIST. FINN WALL.
 3. FINN WALLS SHALL BE CONSTRUCTED IN ACCORDANCE WITH THE REQUIREMENTS OF THE INTERNATIONAL BUILDING CODE (IBC) AND THE INTERNATIONAL MECHANICAL AND ELECTRICAL PLUMBING CODE (IMC/MEPC).
 4. FINN WALLS SHALL BE CONSTRUCTED WITH A MINIMUM OF 12\"/>



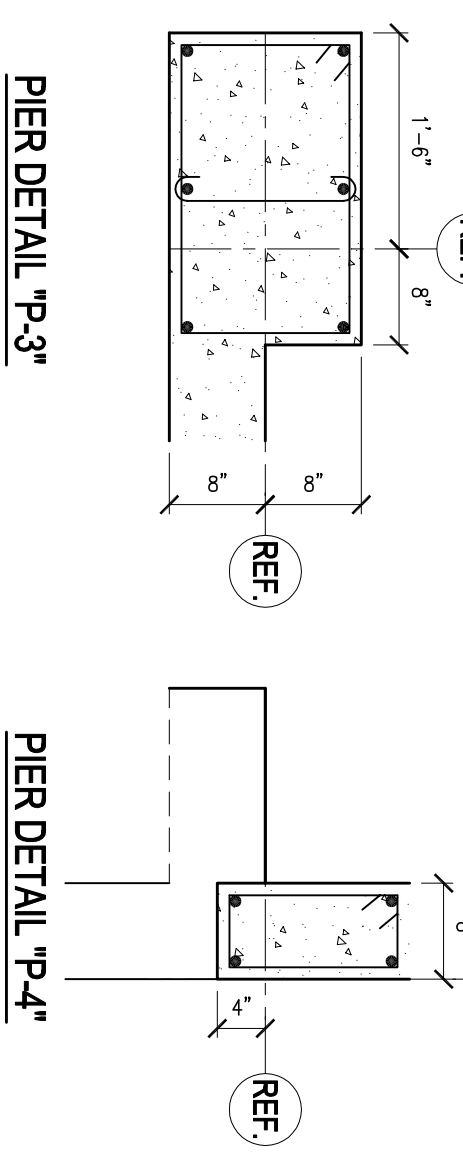
BASE PLATE SCHEDULE

MARK	THICKNESS	WIDTH/LENGTH	ANCHOR BOLTS	EMBED	PROV.
BP-1	3/4"	5'3 1/2\"/>			



TYPICAL BASE PLATE DETAILS
SCALE: 3/4\"/>

- NOTES:**
1. BASE PLATES AND LIFTING PLATES SHALL BE ASTM A36.
 2. GROUT SHALL BE NON-SHINK & NON-METALLIC (REF. SPECIFICATIONS).
 3. ALL ANCHOR BOLTS SHALL BE ASTM F1554 OR ASTM A307 (UNLESS NOTED OTHERWISE).
 4. L.P. = LIFTING PLATE.
 5. USE 1\"/>



PIER DETAILS
SCALE: 3/4\"/>

- NOTES:**
1. PIERS TO BE REINFC. W/ #6 VERT. AS SHOWN AND #3 TIES @ 12\"/>

REVISION LOG

NO.	DATE	DESCRIPTION	REV.

ENGINEER OF RECORD
TIM HARDY, PE

ENGINEER STAMP

HARDY STRUCTURAL ENGINEERING LLC
875 Roosevelt Hwy, Suite 300, Colchester, VT 05446
1 (802) 855-0755 | (802) 855-2886
www.hardyse.com

PROJECT
905 ROOSEVELT PLAZA
COLCHESTER, VERMONT

PROJECT ENGINEER
TIM HARDY

PROJECT ARCHITECT
JARED WAITE

PROJECT NO.
06054.00

SCALE
AS NOTED

DATE
MONTH XX, XXXX

DRAWING NUMBER
S1.1

REVISION

BID DOCUMENTS
01-04-07
NOT FOR CONSTRUCTION